

**JB20PHL/L  
JB26PHL/L**

Capacity 2.0 t / 2.6 t



### Hand/air hydraulic jacking beam for passenger cars and vans

- Low closed height of only 180 mm makes it suitable for vehicles with a low clearance
- Flexible top support beam can be extended up to 1610 mm
- Unique height adjustable support arm system - designed to fit all current lifts
- Two-hand lowering operation with dead man's release, automatic safety locking device and overload valve for optimum safety
- Supplied with 3 extension sets (10/40/85 mm) and rubber cushion for protection of car body

## Options



### Spindle with rubber pad

Increases the lifting height by 32-92 mm.

(Order 2 units)

### Extension bush

Increases the lifting height by 60 mm (Order 2 units)



### Rubber support

Block for protection of car body (40 mm)

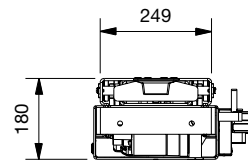
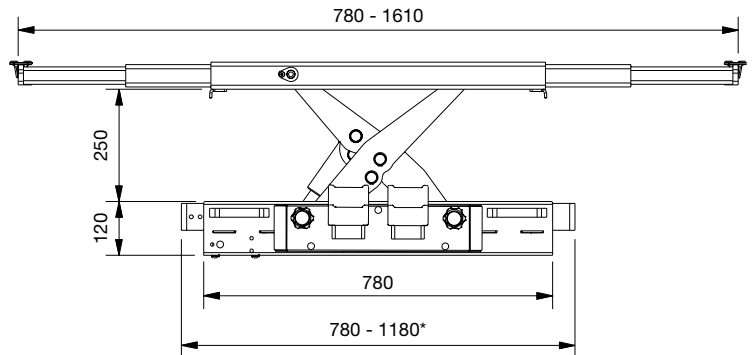
(Order 2 units)



### Extension

Increases the lifting height by 130 mm

(Order 2 units)



\* dimensions excluding support arms

	JB20L	JB26L	JB20PHL	JB26PHL
Capacity	2,0 t	2,6 t	2,0 t	2,6 t
Stroke	250 mm	250 mm	250 mm	250 mm
Min. height	180 mm	180 mm	180 mm	180 mm
Telescopic arms	780-1610 mm	780-1610 mm	780-1610 mm	780-1610 mm
Width (± support arms)	780-1180 mm	780-1180 mm	780-1180 mm	780-1180 mm
Lifting frame (height)	120 mm	120 mm	120 mm	120 mm
Lifting frame (depth)	249 mm	249 mm	249 mm	249 mm
Air supply			8,5-12 bar	8,5-12 bar
Air consumption			350 l/min	350 l/min
Weight (± support arms)	105 kg	105 kg	110 kg	110 kg

**stertil KONI**

 a member of the Stertil Group

Stertil B.V.  
P.O. Box 23  
9288 ZG Kootsterille  
The Netherlands  
Tel. +31(0)512 334444  
info@stertil.nl



www.stertilkoni.com

 Stertil-Koni

 Stertil