

JB32PHL
JB40PHL

Capacity 3.2 t / 4.0 t



Air hydraulic jacking beam for passenger cars, vans and trucks

- Strong and robust design makes it ideal for lifting heavy vehicles
- Low closed height of only 230 mm.
Flexible top support beam can be extended up to 1610 mm for the JB32PHL and 1500 mm for the JB40PHL
- Unique height adjustable support arm system - designed to fit all current lifts
- Two-hand lowering operation with dead man's release, automatic safety locking device and overload valve for optimum safety
- Supplied with 2 extension sets (50/100 mm) for JB40PHL
- Supplied with 3 extension sets (10/40/85 mm) and rubber cushion for JB32PHL

Options



V-saddle

Suitable for lifting under various axles



Disc shape saddle

Suitable for lifting over drain plugs, differential gear etc.

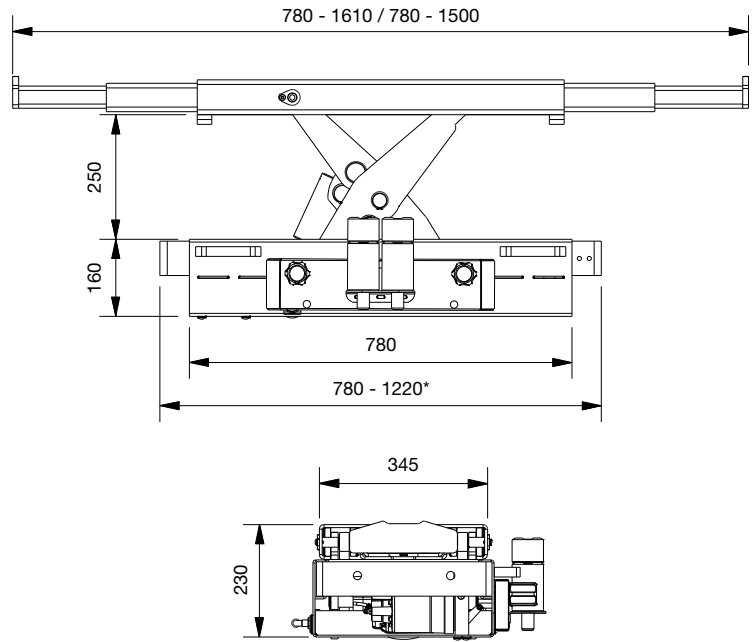
(Ø 145 mm)



Rubber support

Block for car body

40mm or 80mm



* dimensions excluding support arms

	JB32PHL	JB40PHL
Capacity	3,2 t	4,0 t
Stroke	250 mm	250 mm
Min. height	230 mm	230 mm
Telescopic arms	780 - 1610 mm	780 - 1500 mm
Width (without support arms)	780 - 1220 mm	
Lifting frame (height)	160 mm	
Lifting frame (depth)	345 mm	
Air supply	8,5 - 12 bar	
Air consumption	350 l/min	
Weight (without support arms)	175 kg	

stertil KONI

 a member of the Stertil Group

Stertil B.V.
P.O. Box 23
9288 ZG Kootsterille
The Netherlands
Tel. +31(0)512 334444
info@stertil.nl

www.stertilkoni.com

 Stertil-Koni

 Stertil